

BRIEFING

IN THIS ISSUE

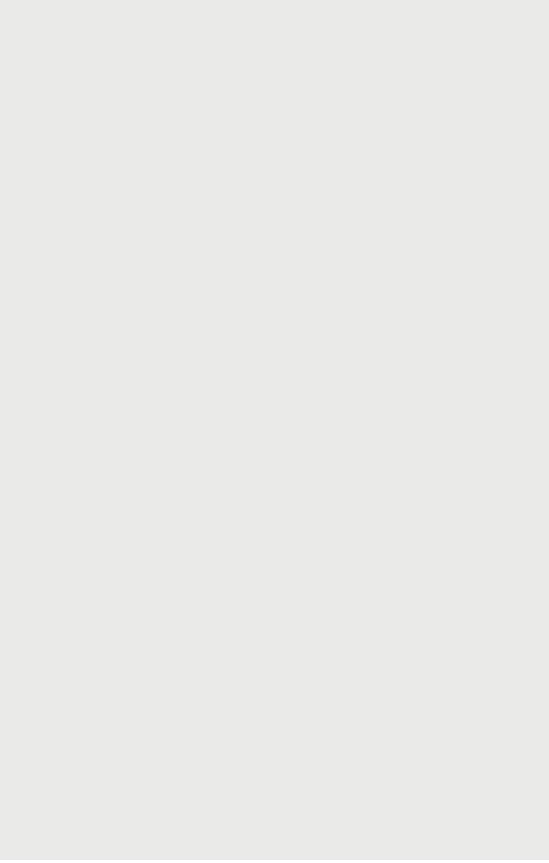
EMPLOYMENT LAW AND POLICY
UPDATES (pages 2-3)

PAY & BENEFITS UPDATES (page 4-5)

OTHER NEWS (page 5)

KEY REMINDERS (page 6)

THE TERMLY LAW AND
POLICY UPDATE FROM
EDUCATION HR



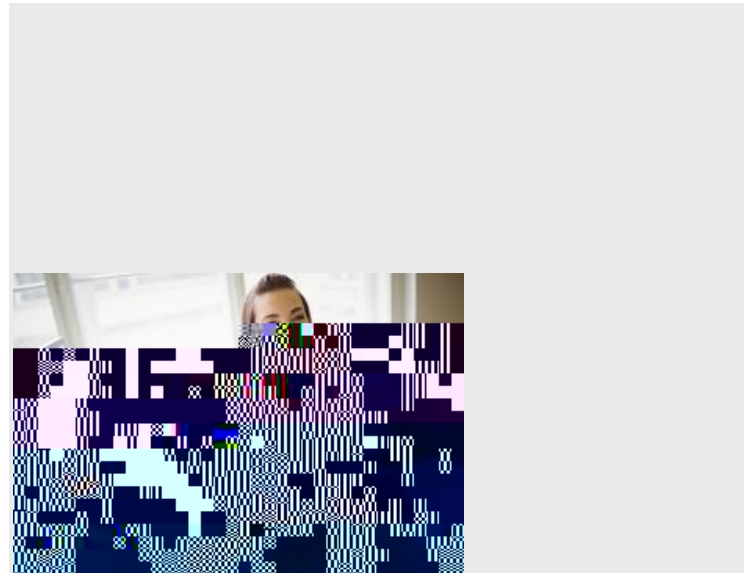


calculation
rate



Brazel vs Harpur | Actions for employers





The draft School Teachers' Pay and Conditions Document (STPCD) 2022/23

Academy trusts and independent schools

NJC Green Book

